

## Product description form

MEDI·CHEF



**Name or identification** Roast Lamb

**Description**

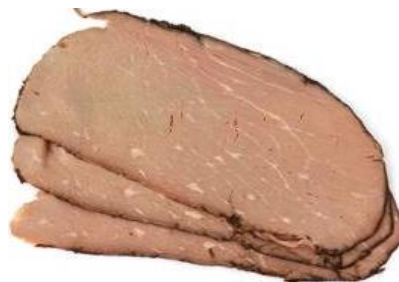
Tender sliced roast lamb

**Production code** C166

**Minimum portion size (g)** 100

**Serves per full tray** 20

**Serves per half tray** 10



**Composition** Roast Lamb Cooked

**Nutritional information**

<b>band</b>	2	
<b>energy</b>	786	kJ
<b>protein</b>	19	g
<b>fat</b>	12	g
<b>carbohydrate</b>	0	g
<b>sodium</b>	60	mg
<b>calcium</b>	6	mg
<b>potassium</b>	298	mg

**Package and shipping**

**Packaging method / Material** Hot fill - stainless steel gastronorm trays  
**Size, weight, etc.** 1 Kg and 2 Kg  
**Label** Labels are date coded and attached during production

**Instructions for preparation** Keep product refrigerated until consumption, serve cold

**Allergen advice**

**NIL**

gluten free ✓  
lactose free ✓  
vegetarian X  
vegan X

**Storage conditions and distribution** All products shall be stored, handled and transported (in an approved Food Transport Vehicle) at 0-5°C  
**Shelf life** 5 days under proper refrigeration

**May contain**

**NIL**

**Made in a facility that also processes products with:** milk, wheat, soy, fish, egg, shellfish, sesame, mustard

**Use of the product**

**Intended use**

May also be used as an ingredient in preparing meals.

**Consumer group**

Consumers of all ages consume this product.

**Quality Statement**

At Medichef we pride ourselves on the consistent quality of service and product that we provide our customers. It is the aim of this company to continue to improve our services and in turn meet or exceed our customer's expectations.

Our commitment to food safety and quality is achieved by our quality practices, through the applications of HACCP and customer driven quality requirements. We undertake to adhere to Good Manufacturing Practices and to comply with both legal and regulatory requirements, as described by FSANZ.

**Origin Statement**

Made in Australia from local and imported ingredients